

**Pressione di lavoro:** 10 bar  
**Filetti cilindrici:** UNI-ISO 228/1 G  
**Filetti conici:** UNI-ISO 7/1 R  
**Filetti metrici:** ISO R/262M

**Working pressure:** 10 bar  
**Parallel Threads:** BSP  
**Taper Threads:** BSPT  
**Metric Threads:** ISO R/262M

Legenda per la composizione delle sigle e varianti standard di silenzianti e regolatori di scarico silenzianti

How to compose standard descriptions and options of silencers and silenced exhaust speed regulators

Famiglia / Family

**S** = Silenzianti / Silencers  
**R** = Regolatori / Regulators

Materiale (Variante)  
 Material (Option)

**X** = Inox / Stainless steel  
**P** = Nylon / Nylon

Filettatura (Variante)  
 Thread (Option)

**N** = NPT  
**M** = Metrica / Metric  
**F** = Femmina / Female

Filetto metrico (variante M)  
 indicare filetto - es: M10x1

**Metric thread (Option M)**  
 indicate thread - ex: M10x1

Articolo / Item  
 da **01** a **22**  
 from **01** to **22**

**N** = Nichelato / Nickel-plated  
**S** = Speciale / Special

Misure filetti (standard BSP)  
 Thread sizes (standard BSP)

**M5** = M5

**18** = 1/8

**14** = 1/4

**38** = 3/8

**12** = 1/2

**34** = 3/4

**01** = 1

**41** = 1-1/4

**21** = 1-1/2

**02** = 2

**22** = 2-1/2

**03** = 3

**04** = 4

**06** = 6

Per i codici ed articoli standard vedi tabelle delle pagine seguenti  
 For standard codes and items see tables on following pages

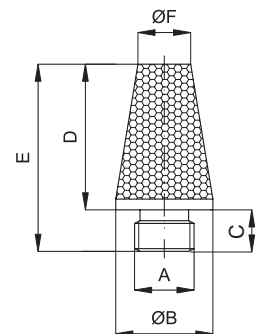
## S01

**Niplo:** Ottone  
**Nipple:** Brass

**Parte filtrante:** Bronzo sferico sinterizzato 36 µm  
**Filter:** Spherical sintered bronze 36 µm



Ottone e bronzo Brass and bronze	Codice Code	Articolo Article	A	B	C	D	E	F	Confezione Order Q.ty
	10001	S01M5	M5	6	4,5	10	14,5	5	100
	10002	S0118	1/8"	12	6	16	22	8	100
	10003	S0114	1/4"	15	6	20	26	11	50
	10004	S0138	3/8"	19	8	30,5	38,5	15	50
	10005	S0112	1/2"	23	9	32	41	18	25
	10006	S0134	3/4"	31	10	33	43	28	10
	10007	S0101	1"	37	12	41	53	32	5
	10173	S01M10x1	M10x1	12	6	16	22	8	100



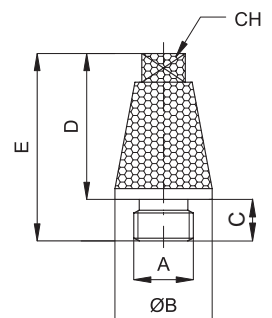
## S02

**Niplo:** Ottone  
**Nipple:** Brass

**Parte filtrante:** Bronzo sferico sinterizzato 36 µm  
**Filter:** Spherical sintered bronze 36 µm



Ottone e bronzo Brass and bronze	Codice Code	Articolo Article	A	B	CH	C	D	E	Confezione Order Q.ty
	10008	S02M5	M5	12	7	4	16	20	100
	10009	S0218	1/8"	12	7	6	16	22	100
	10010	S0214	1/4"	15	9	6	20	26	50
	10011	S0238	3/8"	19	10	8	30	38	50
	10012	S0212	1/2"	23	14	9	32	41	25
	10013	S0234	3/4"	31	20	10	41	51	10
	10014	S0201	1"	37	23	12	48	60	5



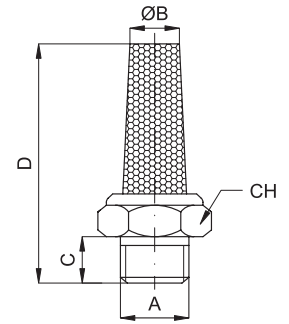
1

**S03**

 Niplo: Ottone  
 Nipple: Brass

 Parte filtrante: Bronzo sferico sinterizzato 36 µm  
 Filter: Spherical sintered bronze 36 µm

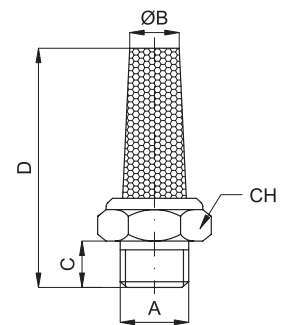

Ottone e bronzo Brass and bronze	Codice Code	Articolo Article	A	B	CH	C	D	Confezione Order Q.ty
	10015	S03M5	M5	4	8	4	16	100
	10216	S03M7	M7	4	8	5	19	100
	10016	S0318	1/8"	7,5	13	6	28	100
	10017	S0314	1/4"	9	16	8	32	50
	10018	S0338	3/8"	12	19	7,5	41	50
	10019	S0312	1/2"	16	24	10	46,5	25
	10020	S0334	3/4"	20,5	30	10	49	10
	10021	S0301	1"	21	36	10	58	5
	10152	SF0318	1/8"F	7,5	13	6	28	100


**S04**

 Niplo: Ottone  
 Nipple: Brass

 Parte filtrante: Bronzo sferico sinterizzato 36 µm  
 Filter: Spherical sintered bronze 36 µm

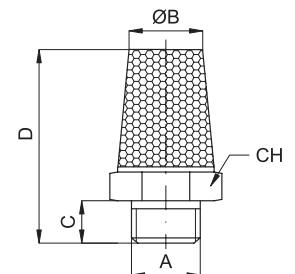

Ottone e bronzo Brass and bronze	Codice Code	Articolo Article	A	B	CH	C	D	Confezione Order Q.ty
	10029	S04M5	M5	4	8	4	24	100
	10030	S0418	1/8"	7	13	6	41,5	100
	10031	S0414	1/4"	8	16	8	52	50
	10032	S0438	3/8"	10	19	7,5	55	50
	10033	S0412	1/2"	14	24	10	67	25
	10034	S0434	3/4"	15	30	10	67	10
	10035	S0401	1"	20	36	10,5	78	5
	10174	S0421	1 1/2"	28	55	20	140	1
	10186	S0402	2"	36	65	17	215	1


**S05**

 Niplo: Acciaio ramato  
 Nipple: Copper plated steel

 Parte filtrante: Bronzo sferico sinterizzato 36 µm  
 Filter: Spherical sintered bronze 36 µm

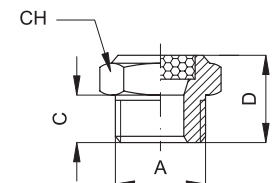

Acciaio ramato e bronzo Copper plated steel and bronze	Codice Code	Articolo Article	A	B	CH	C	D	Confezione Order Q.ty
	10036	S05M5	M5	5	7	3,5	18	100
	10037	S0518	1/8"	8,5	12	4,5	21	100
	10038	S0514	1/4"	11	15	6	27,5	50
	10039	S0538	3/8"	14	19	7	35	50
	10040	S0512	1/2"	17	23	8	42,5	25
	10041	S0534	3/4"	21	30	9	54	10
	10042	S0501	1"	26,5	36	11	67	5


**S07**

 Niplo: Ottone  
 Nipple: Brass

 Parte filtrante: Bronzo sferico sinterizzato 100 µm  
 Filter: Spherical sintered bronze 100 µm


Ottone e bronzo Brass and bronze	Codice Code	Articolo Article	A	CH	C	D	Confezione Order Q.ty
	10046	S07M5	M5	8	4	8,5	100
	10310	S07M7	M7	8	5	10,5	100
	10047	S0718	1/8"	13	6	13	100
	10048	S0714	1/4"	16	8	17	50
	10049	S0738	3/8"	19	7,5	17	50
	10050	S0712	1/2"	24	10	19	25
	10051	S0734	3/4"	30	10	19	10
	10052	S0701	1"	36	10	20	5
10153	SF0718	1/8"F	13	6	13	100	

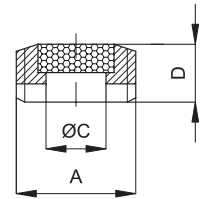


**S08**

 Niplo: Ottone  
 Nipple: Brass

 Parte filtrante: Bronzo sferico sinterizzato 50 µm  
 Filter: Spherical sintered bronze 50 µm

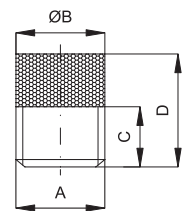

Ottone e bronzo Brass and bronze	Codice Code	Articolo Article	A	C	D	Confezione Order Q.ty
	10054	S0818	1/8"	6	4,5	100
	10055	S0814	1/4"	8	6,5	50
	10056	S0838	3/8"	9,5	7,5	50
	10057	S0812	1/2"	12,5	8,5	25
	10058	S0834	3/4"	19	8,5	10
	10059	S0801	1"	24	10,5	5


**S09**

 Niplo: Ottone  
 Nipple: Brass

 Parte filtrante: Bronzo sferico sinterizzato 36 µm  
 Filter: Spherical sintered bronze 36 µm

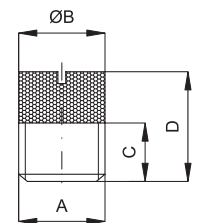

Ottone Brass	Codice Code	Articolo Article	A	B	C	D	Confezione Order Q.ty
	10067	S0918	1/8"	10	4	10	100
	10068	S0914	1/4"	13	6	15	50


**S10**

 Niplo: Ottone  
 Nipple: Brass

 Parte filtrante: Bronzo sferico sinterizzato 36 µm  
 Filter: Spherical sintered bronze 36 µm

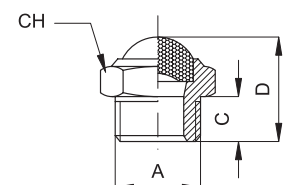

Ottone e bronzo Brass and bronze	Codice Code	Articolo Article	A	B	C	D	Confezione Order Q.ty
	10073	S1018	1/8"	9	4	12,5	100
	10074	S1014	1/4"	12,5	6	14	50
	10075	S1038	3/8"	16	7,5	16	50
	10076	S1012	1/2"	20,5	10	19,5	25
	10077	S1034	3/4"	26	11	23	10
	10078	S1001	1"	33	13	24	5


**S11**

 Niplo: Ottone  
 Nipple: Brass

 Parte filtrante: Rete acciaio inox AISI 304  
 Filter: Net in stainless steel AISI 304


Ottone e inox Brass and inox	Codice Code	Articolo Article	A	CH	C	D	Prezzo € Price €	Confezione Order Q.ty
	10079	S11M5	M5	8	4	8,5	0.48	100
	10080	S1118	1/8"	13	6	15	0.55	100
	10081	S1114	1/4"	16	8	19	0.76	50
	10082	S1138	3/8"	19	7,5	19	1.23	50
	10083	S1112	1/2"	24	10	22	1.70	25
	10084	S1134	3/4"	30	10	25	3.10	10
	10085	S1101	1"	36	10	29	5.50	5
	10154	SF1118	1/8"F	13	6	16	0.79	100



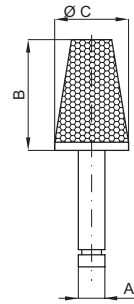
1


**S12**

 Niplo: Ottone  
 Nipple: Brass

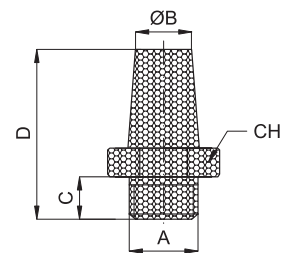
 Parte filtrante: Bronzo sferico sinterizzato 36 µm  
 Filter: Spherical sintered bronze 36 µm

Ottone e bronzo Brass and bronze	Codice Code	Articolo Article	A	B	C	Confezione Order Q.ty
	10215	S124	4	15	10	100
	10093	S126	6	18	13	100
	10094	S128	8	25	17	50


**S13**

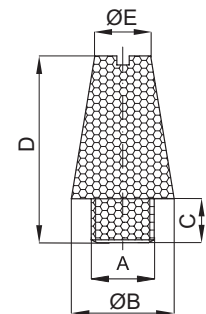
 Niplo e parte filtrante: Bronzo sferico sinterizzato 36 µm  
 Nipple and filter: Spherical sintered bronze 36 µm


Bronzo Bronze	Codice Code	Articolo Article	A	B	CH	C	D	Confezione Order Q.ty
	10095	S1318	1/8"	8	13	6	28	100
	10096	S1314	1/4"	12	17	8	34	50
	10097	S1338	3/8"	15	22	10	36	50
	10098	S1312	1/2"	19	27	12	44	25
	10099	S1334	3/4"	22	32	14	54	10
	10100	S1301	1"	28	41	16	66	5


**S14**

 Niplo e parte filtrante: Bronzo sferico sinterizzato 36 µm  
 Nipple and filter: Spherical sintered bronze 36 µm


Bronzo Bronze	Codice Code	Articolo Article	A	B	C	E	D	Confezione Order Q.ty
	10101	S1418	1/8"	11	5,5	8	21	100
	10102	S1414	1/4"	14	9	10,5	27	50
	10103	S1438	3/8"	18	11	15	36	50
	10104	S1412	1/2"	24	11	19	44	25
	10105	S1434	3/4"	30	13	23,5	65	10
	10106	S1401	1"	36	15	26	75	5


**S15**

 Niplo: Acciaio ramato  
 Nipple: Copper plated steel

 Parte filtrante: Bronzo sferico sinterizzato 36 µm  
 Filter: Spherical sintered bronze 36 µm


Acciaio ramato e bronzo Copper plated steel and bronze	Codice Code	Articolo Article	A	B	CH	C	D	Confezione Order Q.ty
	10107	S1518	1/8"	12	8	4,5	22	100
	10108	S1514	1/4"	15	10	6	28	50
	10109	S1538	3/8"	19	13	8	37	50
	10110	S1512	1/2"	23	15	9	44	25
	10111	S1534	3/4"	30	19	10	56	10
	10112	S1501	1"	37	24	12	67	5

